



Aspen Field Services

Job #: 58424 /

VIN: JALE5W168K7306126

2019 ISUZU NRR DIESEL WITH MORGAN 24' VAN BODY. / N/A

Specifications

Year	2019
Make	Isuzu
Model	NRR
Date of Inspection	08/10/2023
Location of Inspection	4770 S 5600 W Suite West Valley City, Salt Lake City, UT, 84118, USA
VIN	JALE5W168K7306126
GVWR	19,500 LB
Odometer	89,016
Engine Hours	See Notes
EMS Warning Lights	Active Warnings
Cab Interior	No Damages Observed
Driver's Seat	No Damages Observed
Passenger's Seat	No Damages Observed
Transmission Type	Automatic
Pedals	No Damages Observed
Floorboard	No Damages Observed
Radio	Yes
A/C	Yes
Switches and Controls	No Damages Observed
Power Mirrors	No
Heated Mirrors	No
Steering Wheel	No Damages Observed
Mirrors	No Damages Observed
Steps	No Damages Observed
Handrails	No Damages Observed
Exhaust Pipe	No Damages Observed
Engine Compartment	No Damages Observed
Engine Serial Plate	LC000199
Oil Dipstick	Dark Color / Good Level
Coolant Level	Low Level
Suspension	No Damages Observed
Axles	No Damages Observed
Front Lights	No Damages Observed
Rear Lights	N/A
Left Steer Tire Condition	No Damages Observed
Left Steer Tire Brand	Kelly
Left Steer Tire Size	225/70R19.5
Left Outer Drive Tire Condition	No Damages Observed
Left Outer Drive Tire Brand	Sumitomo
Left Outer Drive Tire Size	225/70E19.5

Equipment Photo



Video Inspection Link

<https://app.aspenfieldservices.com/jobs/video/zFzxw8wAPDtBrEMEX>

Notes / Description

The engine hours were not accessible to be captured on this unit. The removed van-box was not taken into consideration for the Wear \$ Tear as requested by ISUZU-FIN.



Aspen Field Services

Job #: 58424 /

VIN: JALE5W168K7306126

Left Inner Drive Tire Condition	No Damages Observed
Right Steer Tire Condition	No Damages Observed
Right Steer Tire Brand	Bridgeston
Right Steer Tire Size	225/70E19.5
Right Outer Drive Tire Condition	No Damages Observed
Right Outer Drive Tire Brand	Ironman
Right Outer Drive Tire Size	225/70R19.5
Right Inner Drive Tire Condition	No Damages Observed
Axle Information	F: 7,275 lbs / R:13,660 lbs
Transmission Information	RSU
Engine Information	RJS / 4HK1

Visible Damages	
Active Warnings	The dash is showing a warning for services needed.
Instrument Cluster	The plastic face is cracked.
Windshield	The glass is cracked.
Wiring	There is wiring exposed under the dash on the driver side.
Coolant	The coolant is low in the reservoir.
Engine Oil	The engine oil is dark in color.
Coolers	The coolers are dirty.
Wheel	The front right wheel needs paint.
Left Inner Drive Tire	The tire's shoulder is worn. The tire is flat.
Right Inner Drive Tire	The tire's shoulder is worn.

Aspen Field Services



Front Left / 08-10-2023



Front Right / 08-10-2023

Aspen Field Services



Front / 08-11-2023



Right / 08-11-2023

Aspen Field Services



Rear Right / 08-10-2023



Rear / 08-11-2023

Aspen Field Services

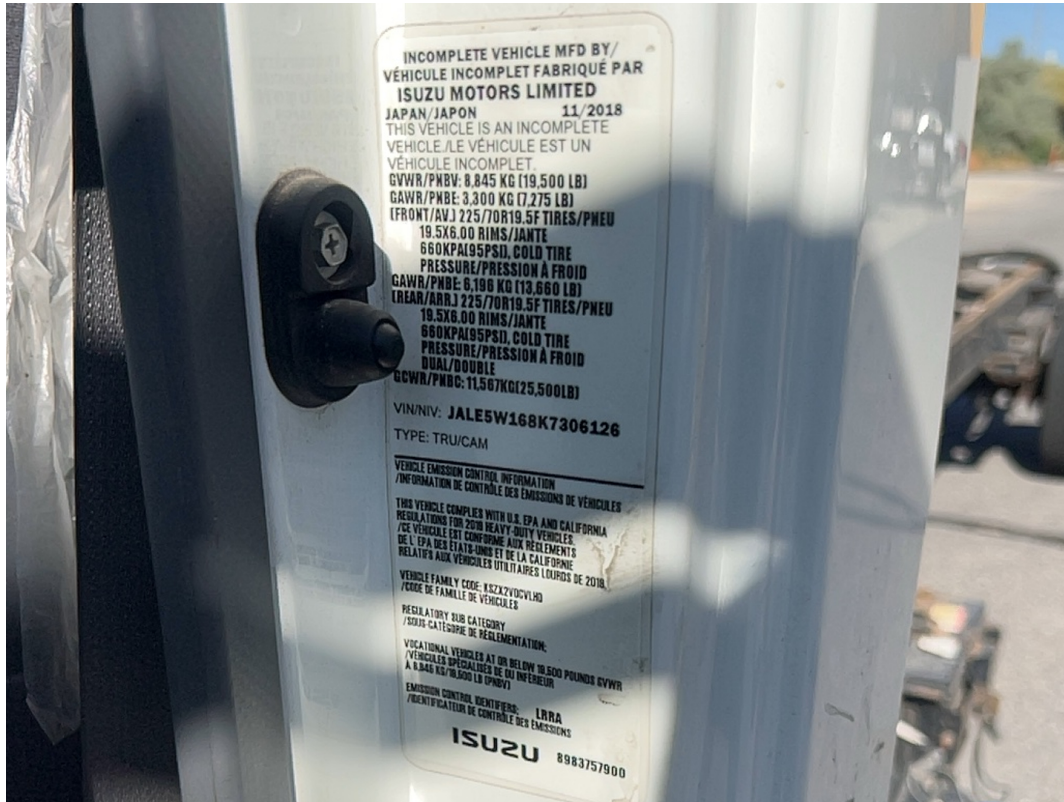


Rear Left / 08-10-2023



Left / 08-10-2023

Aspen Field Services



VIN: JALE5W168K7306126 / Axle Information / GVWR:19,500 LB / 08-11-2023



Odometer: 89,016 / 08-10-2023

Aspen Field Services



EMS Warning Lights / 08-10-2023



Cab Interior / 08-10-2023

Aspen Field Services



Driver's Seat / 08-10-2023



Passenger's Seat / 08-10-2023

Aspen Field Services



Steps / 08-10-2023

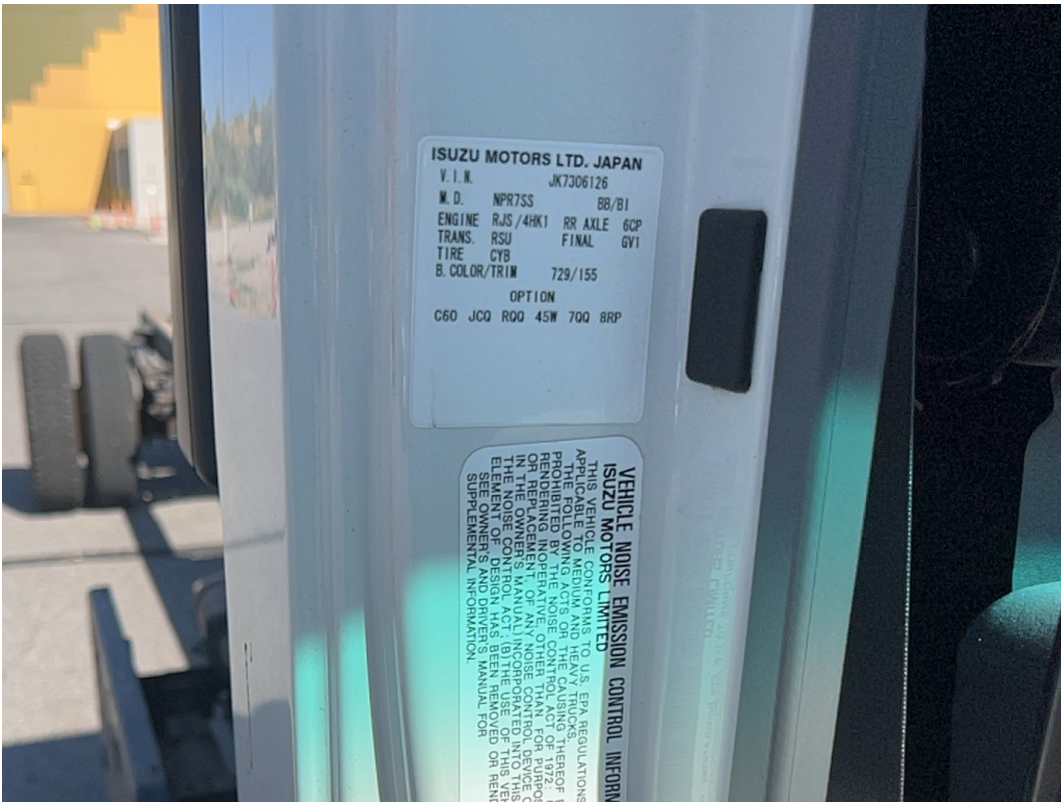


Handrails / 08-10-2023

Aspen Field Services



Handrails / 08-10-2023



Engine Information / Transmission Information / 08-11-2023

Handrails / 08-10-2023



Handrails / 08-10-2023

Aspen Field Services



Steps / 08-10-2023



Pedals / 08-10-2023

Aspen Field Services



Floorboard / 08-10-2023



Transmission / 08-10-2023

Aspen Field Services



Radio / A/C / Switches and Controls / 08-10-2023



Switches and Controls / 08-10-2023

Aspen Field Services



Switches and Controls / 08-10-2023



Switches and Controls / 08-10-2023

Aspen Field Services



Steering Wheel / 08-10-2023



Mirrors / 08-10-2023

Aspen Field Services



Mirrors / 08-10-2023



Exhaust Pipe / 08-10-2023

Aspen Field Services



Engine Compartment / 08-10-2023



Engine Compartment / 08-10-2023

Aspen Field Services



Engine Compartment / 08-10-2023



Coolant Level / 08-10-2023

Aspen Field Services



Engine Serial Plate: LC000199 / 08-10-2023



Oil Dipstick / 08-10-2023

Aspen Field Services



Left Steer Tire Condition / 08-10-2023



Left Steer Tire Brand / 08-10-2023

Aspen Field Services



Left Steer Tire Size / 08-10-2023



Left Steer Tire Condition / 08-10-2023

Aspen Field Services



Suspension / Axles / 08-10-2023



Right Steer Tire Condition / 08-10-2023

Aspen Field Services



Right Steer Tire Brand / 08-11-2023



Right Steer Tire Size / 08-11-2023

Aspen Field Services



Right Steer Tire Condition / 08-10-2023



Suspension / Axles / 08-10-2023

Aspen Field Services



Right Outer Drive Tire Condition / 08-10-2023



Right Outer Drive Tire Condition / 08-11-2023

Aspen Field Services



Right Outer Drive Tire Size / 08-10-2023



Right Inner Drive Tire Condition / Right Outer Drive Tire Condition / 08-11-2023

Aspen Field Services



Suspension / Axles / 08-10-2023



Left Outer Drive Tire Condition / 08-10-2023

Aspen Field Services



Left Outer Drive Tire Brand / 08-10-2023



Left Outer Drive Tire Size / 08-11-2023

Aspen Field Services



Left Inner Drive Tire Condition / Left Outer Drive Tire Condition / 08-11-2023



Suspension / Axles / 08-10-2023

Aspen Field Services



Front Lights / 08-10-2023