

## 2018 - ISUZU NPR-HD DIESEL WITH MORGAN 16' INSULATED VAN BODY / N/A

Specifications	
Year	2018
Make	Isuzu
Model	NPR-HD Diesel with Morgan 16' Insulated Van Body
Date of Inspection	08/14/2023
Location of Inspection	109 Lindberg Ave, Methuen, MA, 01844, USA
VIN	JALC4W16XJ7009030
GVWR	14,500 lbs
Odometer	158,624
Engine Hours	See Notes
EMS Warning Lights	No Active Warnings
Cab Interior	No Damages Observed
Driver's Seat	See Notes
Passenger's Seat	See Notes
Transmission Type	No Damages Observed
Pedals	No Damages Observed
Floorboard	No Damages Observed
Radio	Yes
A/C	Yes
Switches and Controls	No Damages Observed
Power Mirrors	No
Heated Mirrors	Yes
Steering Wheel	No Damages Observed
Mirrors	No Damages Observed
Steps	No Damages Observed
Handrails	See Notes
Exhaust Pipe	No Damages Observed
Engine Compartment	No Damages Observed
Engine Serial Plate	8983449080
Oil Dipstick	Dark Color / Good Level
Coolant Level	Good Level
Suspension	No Damages Observed
Axles	No Damages Observed
Front Lights	No Damages Observed
Rear Lights	See Notes
Left Steer Tire Condition	No Damages Observed
Left Steer Tire Brand	Firestone
Left Steer Tire Size	Obstructed
Left Outer Drive Tire Condition	No Damages Observed
Left Outer Drive Tire Brand	Firestone

### Equipment Photo



### Video Inspection Link

<https://app.aspenfieldservices.com/jobs/video/Rvua7gc75uCdWZX3z>

### Notes / Description

The engine hours were not accessible to be captured on this unit.



## Aspen Field Services

Job #: 58482 /

VIN: JALC4W16XJ7009030

Left Outer Drive Tire Size	LT215/85R16
Left Inner Drive Tire Condition	No Damages Observed
Right Steer Tire Condition	No Damages Observed
Right Steer Tire Brand	Firestone
Right Steer Tire Size	LT215/85R16
Right Outer Drive Tire Condition	No Damages Observed
Right Outer Drive Tire Brand	Firestone
Right Outer Drive Tire Size	LT215/85R16
Right Inner Drive Tire Condition	No Damages Observed
Axle Information	F: 5,360 LB / R: 9,880 LB
Transmission Information	RSU
Engine Information	RJS / 4HK1 / HP: 210

Visible Damages	
Grille	The front grill is cracked on the left side
Grab Iron	The right rear grab iron is bent.
Seat Cushion	The bottom seat cushions are stained.
Radio Knob	The knob is missing from the radio.
Engine Oil	The engine oil is dark in color.
Chrome Wheel Covers	The right front wheel cover is dented and the rear right is missing.
Lug Nut Covers	Some of the lug nuts covers are missing.
Rear Differential	There is oil on the rear differential. Possible leak.
Lug Nuts	The rear left lug nuts are put on backwards.
Frame Rails	The frame rails are rusty.
Light Lens	The rear left turn signal lens is cracked.



# Aspen Field Services



Front Right / 08-14-2023



Front Left / 08-14-2023



# Aspen Field Services



Front / 08-14-2023



Left / 08-14-2023



# Aspen Field Services



Rear Left / 08-14-2023



Rear / 08-14-2023



# Aspen Field Services



Rear Right / 08-14-2023



VIN: JALC4W16XJ7009030 / Axle Information / GVWR: 14,500 lbs / 08-14-2023



# Aspen Field Services



Odometer: 158,624 / 08-14-2023



EMS Warning Lights / 08-14-2023



# Aspen Field Services



Cab Interior / Steering Wheel / Steps / 08-14-2023



Driver's Seat / 08-14-2023



# Aspen Field Services



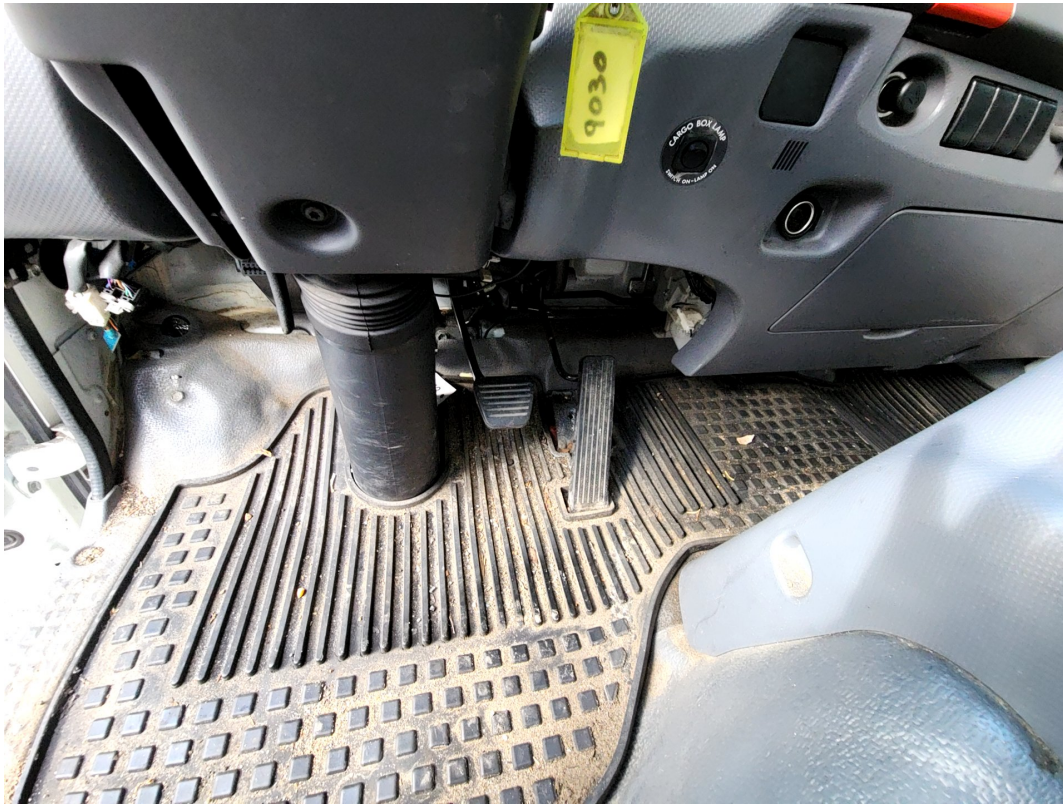
Passenger's Seat / 08-14-2023



Transmission / 08-14-2023



# Aspen Field Services



Pedals / Floorboard / 08-14-2023



Radio / A/C / Switches and Controls / Heated Mirrors / 08-14-2023



# Aspen Field Services



Switches and Controls / 08-14-2023



Mirrors / 08-14-2023



# Aspen Field Services



Steps / 08-14-2023



Handrails / 08-14-2023



# Aspen Field Services



Mirrors / 08-14-2023



Handrails / 08-14-2023



# Aspen Field Services



Steps / 08-14-2023



Transmission Information / Engine Information / 08-14-2023



# Aspen Field Services



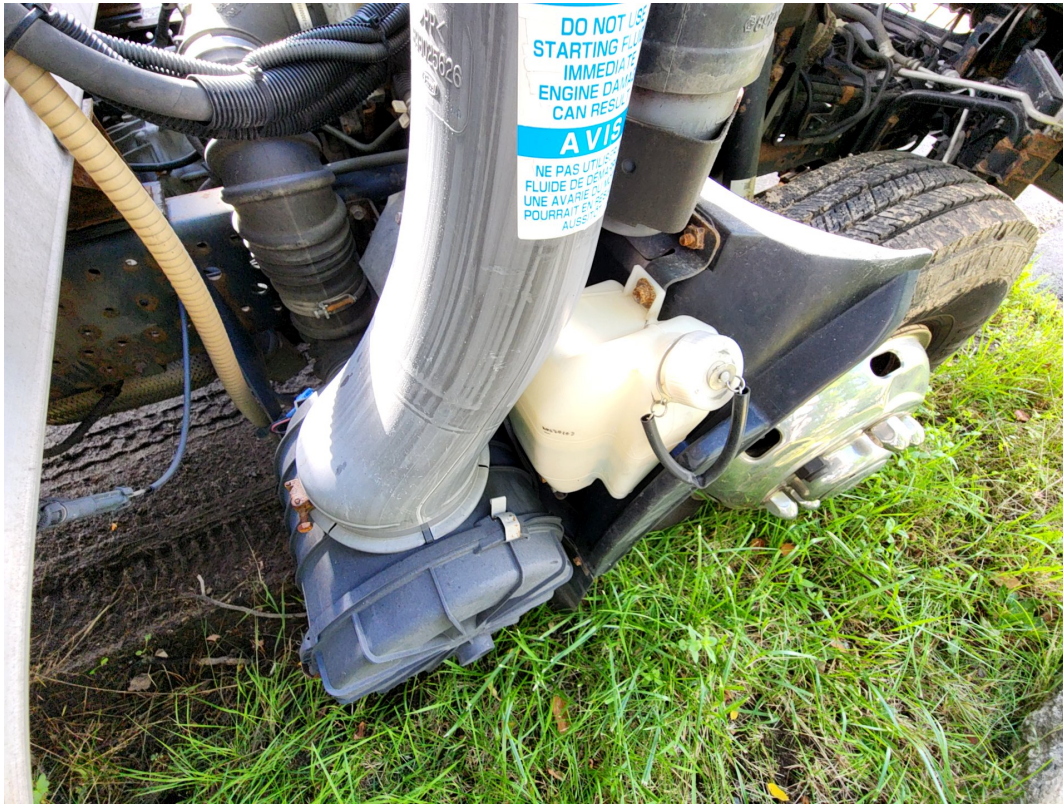
Exhaust Pipe / 08-14-2023



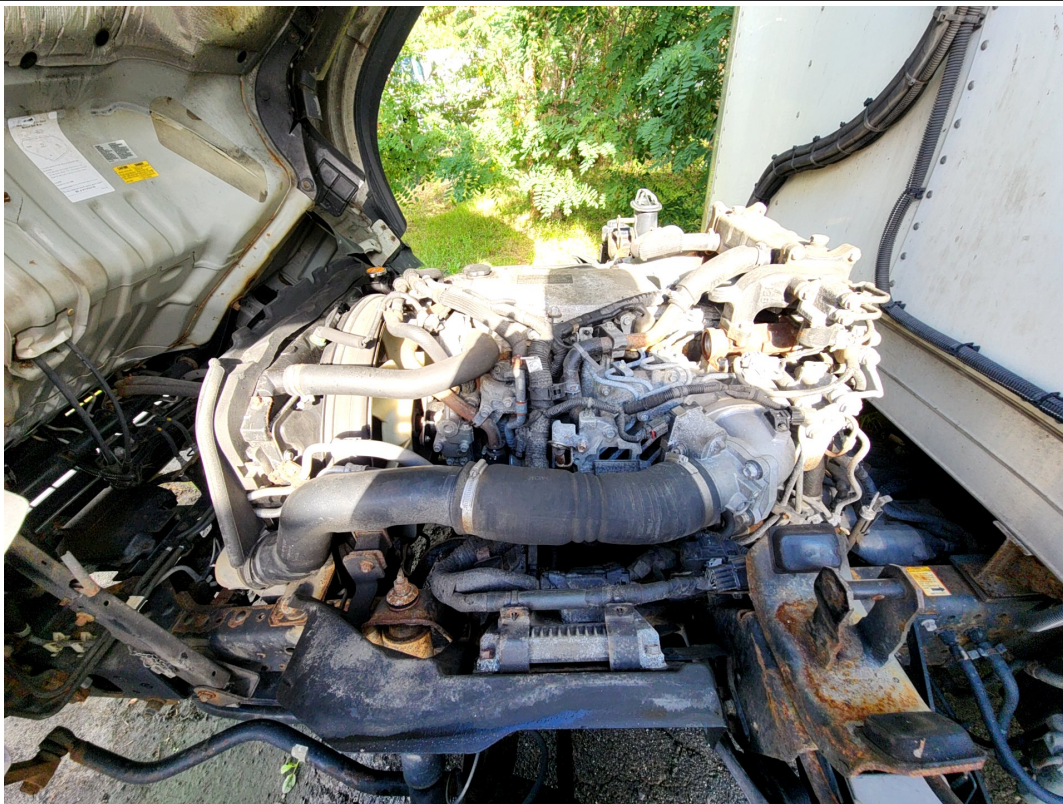
Engine Compartment / 08-14-2023



# Aspen Field Services



Coolant Level / 08-14-2023



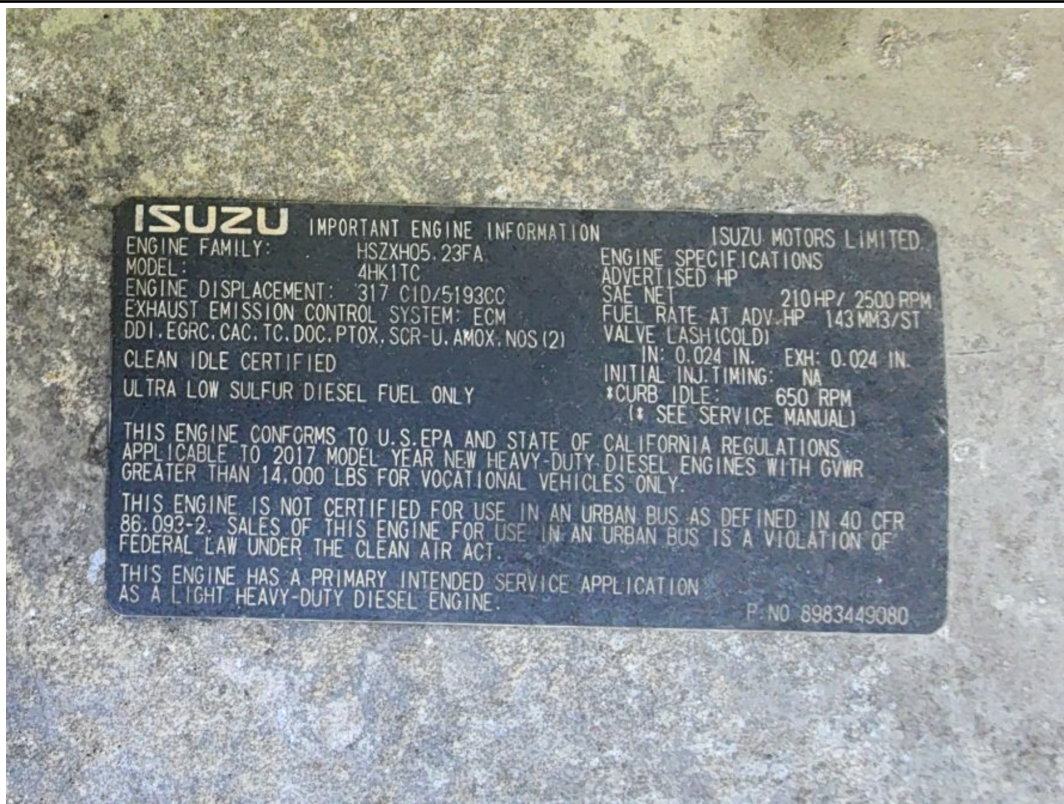
Engine Compartment / 08-14-2023



# Aspen Field Services



Oil Dipstick / 08-14-2023



Engine Serial Plate: 8983449080 / 08-14-2023



# Aspen Field Services



Left Steer Tire Condition / 08-14-2023



Left Steer Tire Brand / 08-14-2023



## Aspen Field Services



Left Steer Tire Condition / 08-14-2023



Suspension / Axles / 08-14-2023



# Aspen Field Services



Right Steer Tire Condition / 08-14-2023



Right Steer Tire Brand / 08-14-2023



# Aspen Field Services



Right Steer Tire Size / 08-14-2023



Right Steer Tire Condition / 08-14-2023



# Aspen Field Services



Suspension / Axles / 08-14-2023



Right Outer Drive Tire Condition / 08-14-2023



# Aspen Field Services



Right Outer Drive Tire Brand / 08-14-2023



Right Outer Drive Tire Size / 08-14-2023



# Aspen Field Services



Right Inner Drive Tire Condition / Right Outer Drive Tire Condition / 08-14-2023



Suspension / Axles / 08-14-2023



# Aspen Field Services



Suspension / Axles / 08-14-2023



Left Outer Drive Tire Condition / 08-14-2023



# Aspen Field Services



Left Outer Drive Tire Brand / 08-14-2023



Left Outer Drive Tire Size / 08-14-2023



# Aspen Field Services



Left Inner Drive Tire Condition / Left Outer Drive Tire Condition / 08-14-2023



Suspension / Axles / 08-14-2023



# Aspen Field Services



Front Lights / 08-14-2023



Front Lights / 08-14-2023



# Aspen Field Services



Rear Lights / 08-14-2023



Rear Lights / 08-14-2023



# Aspen Field Services



Interior / 08-14-2023