



Aspen Field Services

Job #: 59575 /

VIN: JALC4W162J7009166

SUPREME 16' DRY VAN BODY, DIESEL 2018 - ISUZU NPR-HD / LA122588 DARREN ANDERSON INVESTMENTS CORP

Specifications	
Year	2018
Make	Isuzu
Model	NPR-HD
Date of Inspection	08/29/2023
Location of Inspection	220 North 650 West, Kaysville, UT, 84037, USA
VIN	JALC4W162J7009166
GVWR	14,500 lbs
Odometer	147,321
Engine Hours	6,247
EMS Warning Lights	Active Warnings
Cab Interior	No Damages Observed
Driver's Seat	See Notes
Passenger's Seat	See Notes
Transmission Type	Automatic
Pedals	No Damages Observed
Floorboard	No Damages Observed
Radio	Yes
A/C	Yes
Switches and Controls	No Damages Observed
Power Mirrors	No
Heated Mirrors	No
Steering Wheel	No Damages Observed
Mirrors	No Damages Observed
Steps	No Damages Observed
Handrails	See Notes
Exhaust Pipe	No Damages Observed
Engine Compartment	No Damages Observed
Engine Serial Plate	Obstructed
Oil Dipstick	See Notes
Coolant Level	Empty Reservoir
Suspension	No Damages Observed
Axles	No Damages Observed
Front Lights	No Damages Observed
Rear Lights	No Damages Observed
Left Steer Tire Condition	No Damages Observed
Left Steer Tire Brand	Crosswind
Left Steer Tire Size	LT215/85R16
Left Outer Drive Tire Condition	No Damages Observed
Left Outer Drive Tire Brand	Toyo

Equipment Photo



Notes / Description

Some of the engine information was obtained via a VIN-Decoding software. The engine oil is dry, indicating an empty reservoir or a very low engine oil level.



Aspen Field Services

Job #: 59575 /

VIN: JALC4W162J7009166

Left Outer Drive Tire Size	LT215/85R16
Left Inner Drive Tire Condition	No Damages Observed
Right Steer Tire Condition	No Damages Observed
Right Steer Tire Brand	Crosswind
Right Steer Tire Size	LT215/85R16
Right Outer Drive Tire Condition	No Damages Observed
Right Outer Drive Tire Brand	Toyo
Right Outer Drive Tire Size	LT215/85R16
Right Inner Drive Tire Condition	No Damages Observed
Axle Information	F: 5,360 LB / R: 9,880 LB
Transmission Information	RSU
Engine Information	4HK1TC / 210 HP / 5.2L

Visible Damages	
Windshield	The windshield is cracked.
Gasket	The windshield gasket is coming off.
Rear Top Lip	The lip is bent on the rear of the box.
Grab Iron	The rear left grab iron is missing on the box.
Rear Door Bolts	The bolts in the rear door are rusty.
Bumper	The rear bumper is bent.
Warnings	There are active warnings lit on the EMS Panel.
Seat Cushions	There are holes in the bottom seat cushions.
Plywood Panels	The wood panels inside the box has holes.
Coolant	The coolant is empty in the reservoir.
Engine Oil	There is no engine oil on the dipstick.
Front Wheels	The front wheels are rusty.
Left Inner Drive Tire	The tire's tread is worn out.
Left Lip	The left side lip of the box is bent down.
Back Up Alarm	The alarm did not sound when the unit was put in reverse.

Aspen Field Services



Front Left / 08-29-2023



Front / 08-29-2023

Aspen Field Services



Front Right / 08-29-2023



Right / 08-29-2023

Aspen Field Services



Rear Right / 08-29-2023



Rear / 08-29-2023

Aspen Field Services

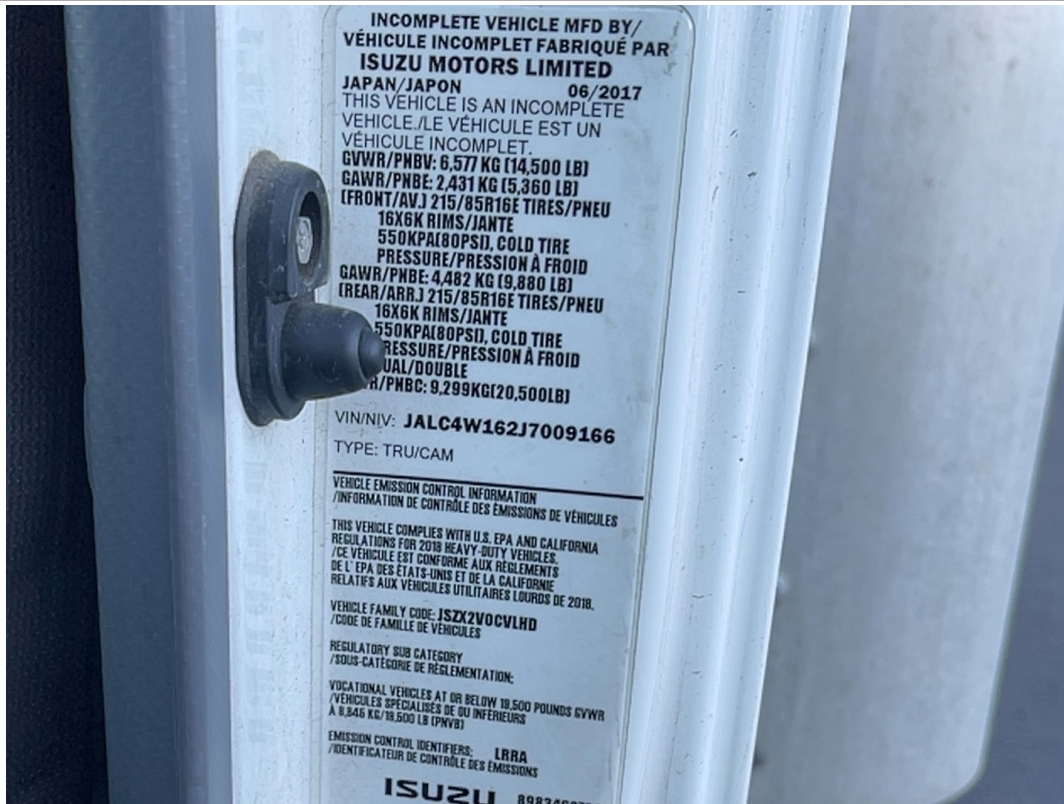


Rear Left / 08-29-2023



Left / 08-29-2023

Aspen Field Services



VIN: JALC4W162J7009166 / GVWR: 14,500 lbs / Axle Information / 08-29-2023



Odometer: 147,321 / 08-29-2023

Aspen Field Services



Engine Hours: 6,247 / 08-29-2023



EMS Warning Lights / 08-29-2023

Aspen Field Services



Cab Interior / 08-29-2023



Driver's Seat / 08-29-2023

Aspen Field Services



Passenger's Seat / 08-29-2023



Damages / 08-29-2023

Aspen Field Services

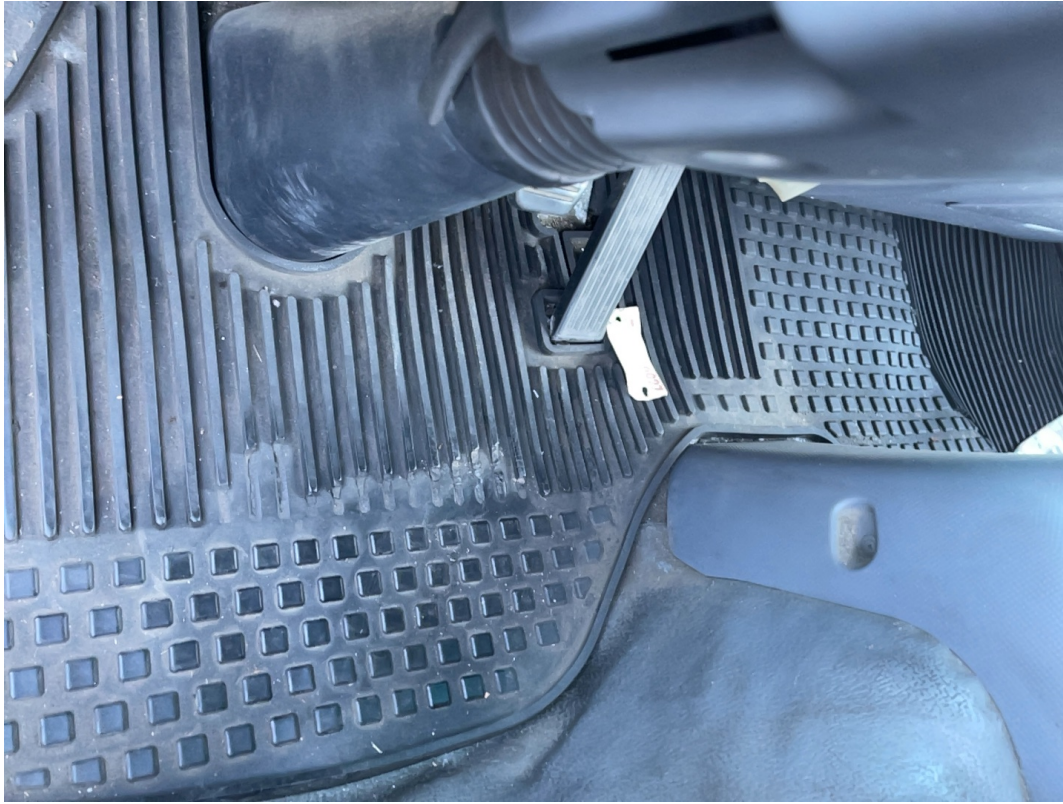


Transmission / 08-29-2023



Pedals / 08-29-2023

Aspen Field Services



Floorboard / 08-29-2023



Radio / A/C / Switches and Controls / 08-29-2023

Aspen Field Services



Switches and Controls / 08-29-2023



Mirrors / 08-29-2023

Aspen Field Services



Mirrors / Handrails / 08-29-2023



Steering Wheel / 08-29-2023

Aspen Field Services

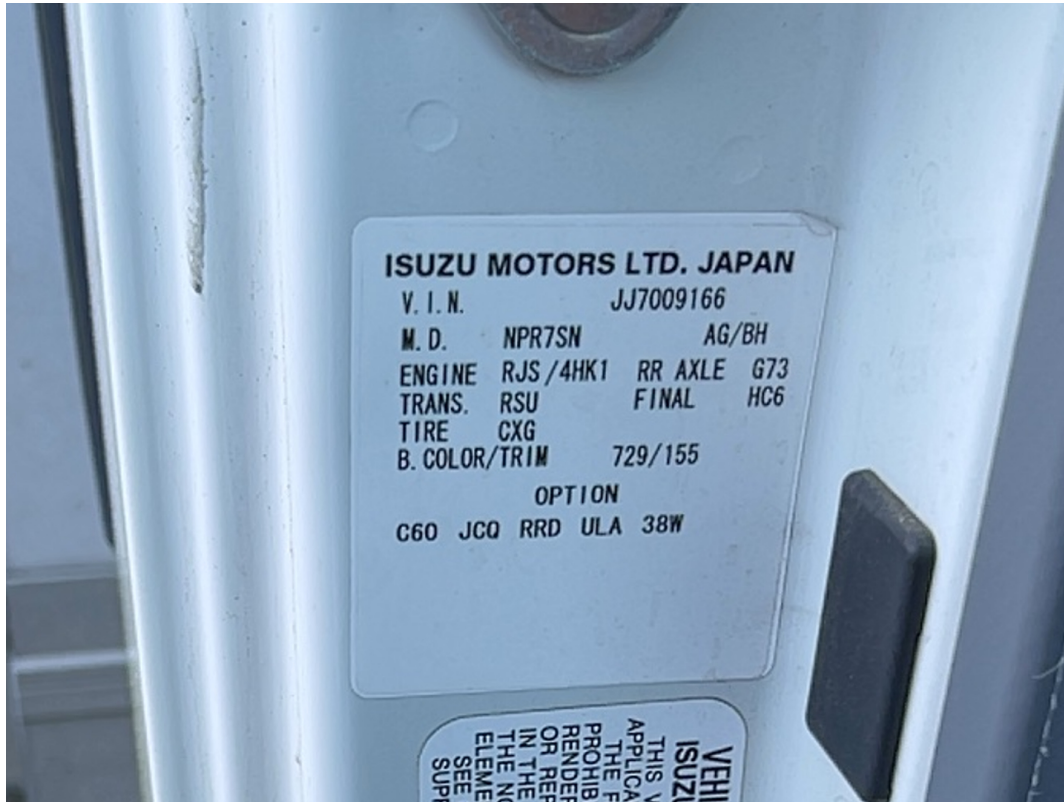


Steps / Handrails / 08-29-2023



Steps / Handrails / 08-29-2023

Aspen Field Services



Transmission Information / Engine Information / 08-29-2023



Exhaust Pipe / 08-29-2023

Aspen Field Services

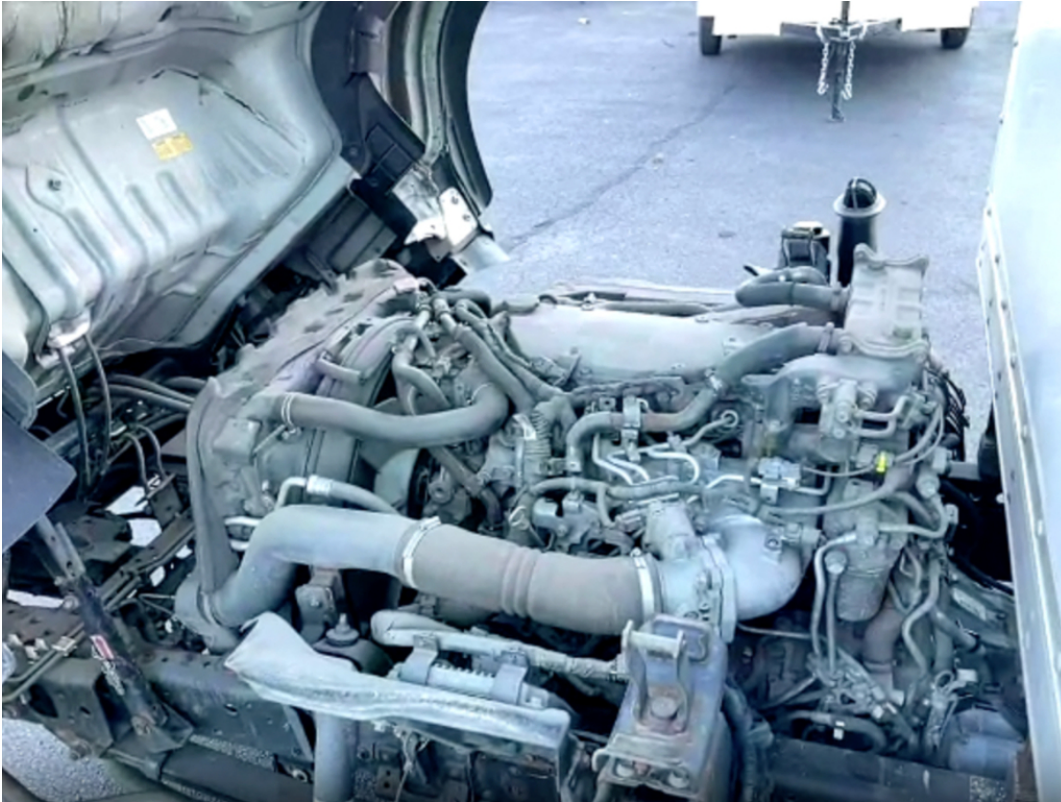


Interior / 08-29-2023



Engine Compartment / 08-29-2023

Aspen Field Services

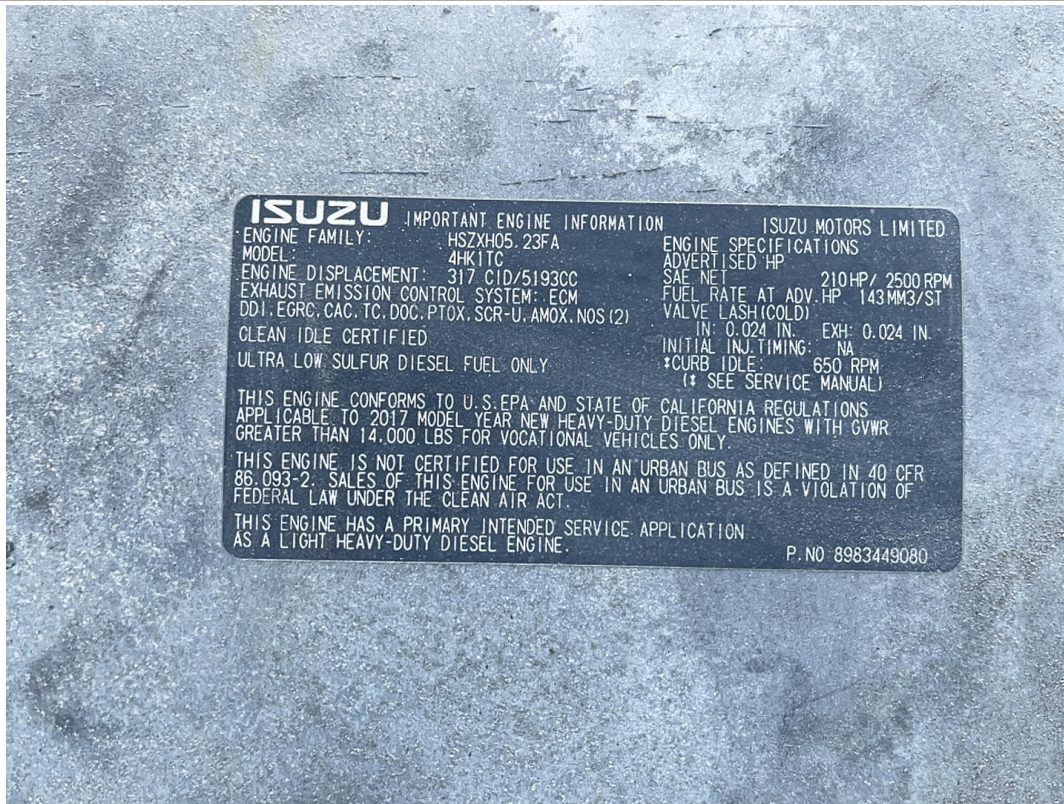


Engine Compartment / 08-29-2023



Coolant Level / 08-29-2023

Aspen Field Services



Engine Information / 08-29-2023



Left Steer Tire Condition / 08-29-2023

Aspen Field Services



Left Steer Tire Brand / 08-29-2023



Oil Dipstick / 08-29-2023

Aspen Field Services



Left Steer Tire Size / 08-29-2023



Left Steer Tire Condition / 08-29-2023

Aspen Field Services



Suspension / Axles / 08-29-2023



Right Steer Tire Condition / 08-29-2023

Aspen Field Services



Right Steer Tire Brand / 08-29-2023



Right Steer Tire Size / 08-29-2023

Aspen Field Services



Right Steer Tire Condition / 08-29-2023



Suspension / Axles / 08-29-2023

Aspen Field Services



Right Outer Drive Tire Condition / 08-29-2023



Right Outer Drive Tire Brand / 08-29-2023

Aspen Field Services



Right Outer Drive Tire Condition / Right Inner Drive Tire Condition / 08-29-2023



Right Outer Drive Tire Size / 08-29-2023

Aspen Field Services



Suspension / Axles / 08-29-2023



Left Outer Drive Tire Condition / 08-29-2023

Aspen Field Services



Left Outer Drive Tire Brand / 08-29-2023



Left Outer Drive Tire Condition / Left Inner Drive Tire Condition / 08-29-2023

Aspen Field Services



Suspension / Axles / 08-29-2023



Left Outer Drive Tire Size / 08-29-2023

Aspen Field Services



Rear Lights / 08-29-2023



Front Lights / 08-29-2023