

## 20' SUPREME DRY VAN BODY WITH MAXON TE-20 LIFTGATE, DIESEL 2019 ISUZU NRR / LA129957 M&M MOVING, CO.

Specifications	
Year	2019
Make	Isuzu
Model	NRR
Date of Inspection	08/31/2023
Location of Inspection	442 Southwest Cutoff, Worcester, MA, 01604, USA
VIN	JALE5W163K7305806
GVWR	19,500 LB
Odometer	178,807
Engine Hours	4,719
EMS Warning Lights	No Active Warnings
Cab Interior	See Notes
Driver's Seat	No Damages Observed
Passenger's Seat	No Damages Observed
Transmission Type	Automatic
Pedals	No Damages Observed
Floorboard	No Damages Observed
Radio	Yes
A/C	Yes
Switches and Controls	No Damages Observed
Power Mirrors	No
Heated Mirrors	No
Steering Wheel	No Damages Observed
Mirrors	No Damages Observed
Steps	No Damages Observed
Handrails	No Damages Observed
Exhaust Pipe	No Damages Observed
Engine Compartment	No Damages Observed
Engine Serial Plate	Obstructed
Oil Dipstick	Good Color / Good Level
Coolant Level	Good Level
Suspension	No Damages Observed
Axles	No Damages Observed
Front Lights	No Damages Observed
Rear Lights	No Damages Observed
Left Steer Tire Condition	See Notes
Left Steer Tire Brand	Rovelo
Left Steer Tire Size	225/70R19.5
Left Outer Drive Tire Condition	See Notes
Left Outer Drive Tire Brand	Bridgestone

### Equipment Photo



### Video Inspection Link

<https://app.aspenfieldservices.com/jobs/video/QikhWQ65vcfNdmD4e>

### Notes / Description

The engine's fuel capacity (in liters) was obtained from a VIN-Decoding software.



## Aspen Field Services

Job #: 59623 /

VIN: JALE5W163K7305806

Left Outer Drive Tire Size	225/70R19.5
Left Inner Drive Tire Condition	See Notes
Right Steer Tire Condition	No Damages Observed
Right Steer Tire Brand	Rovelo
Right Steer Tire Size	225/70R19.5
Right Outer Drive Tire Condition	No Damages Observed
Right Outer Drive Tire Brand	Roadmaster
Right Outer Drive Tire Size	225/70R19.5
Right Inner Drive Tire Condition	See Notes
Axle Information	F: 7,275 LB / R: 13,660 LB
Transmission Information	RSU
Engine Information	Isuzu 4HK1TC / 210 HP / 5.2L

Visible Damages	
Sheet Metal Panels	The panels are scratched and dented on the box.
Top Lip	The top rear left lip of the box is bent.
Door Bolts	The rear door bolts are rusty.
Instrument Cluster	The plastic face on the instrument cluster is cracked.
Right Door Gasket	The rubber gasket is falling off the bottom of the door.
Left Steer Tire	The tire has a gouge on the sidewall.
A/C Condenser	The condenser is bent and looks to be leaking.
Left Drive Tires	Both rear left drive tires' treads are worn down.
Right Inner Drive Tire	The tire's tread is worn down.
Shield Bracket	The shield bracket is cracked by the cooler on the right side of the engine.



# Aspen Field Services



Front Left / 08-31-2023



Front / 08-31-2023



# Aspen Field Services



Front Right / 08-31-2023



Rear Left / 08-31-2023



# Aspen Field Services



Left / 08-31-2023



Rear / 08-31-2023



# Aspen Field Services



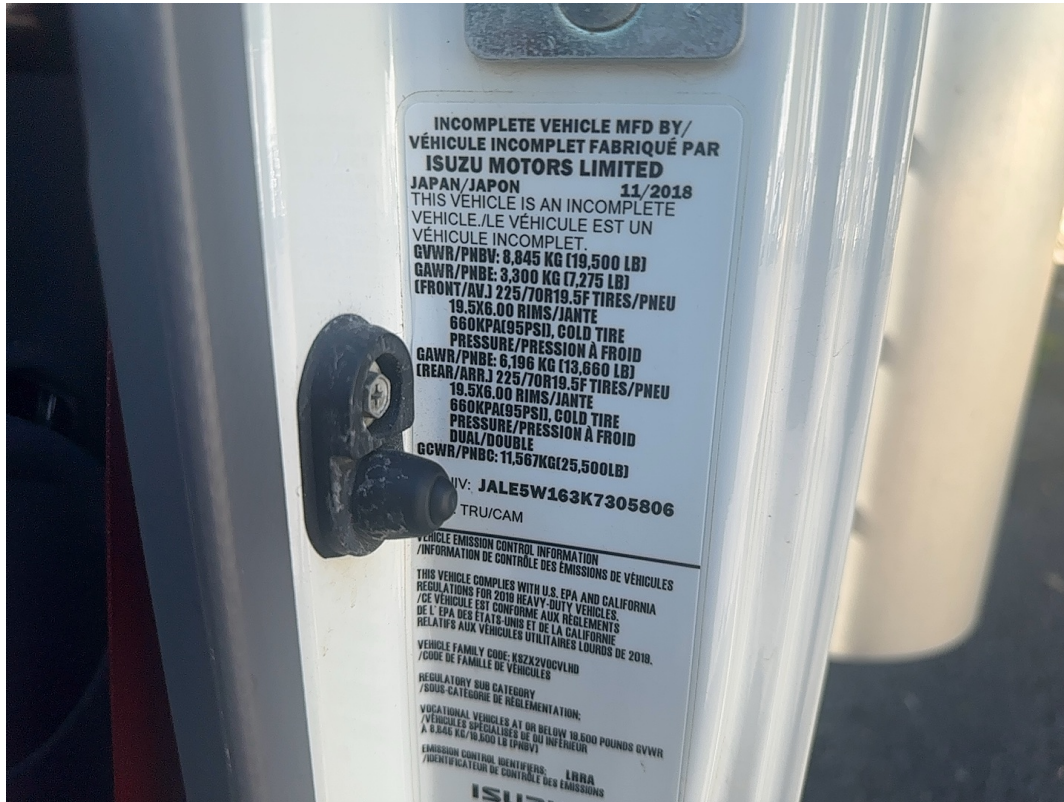
Rear Right / 08-31-2023



Right / 08-31-2023



# Aspen Field Services



VIN: JALE5W163K7305806 / GVWR:19,500 LB / Axle Information / 08-31-2023



EMS Warning Lights / 08-31-2023



## Aspen Field Services



Odometer: 178,807 / 08-31-2023



Engine Hours: 4,719 / 08-31-2023



# Aspen Field Services



Cab Interior / 08-31-2023



Cab Interior / 08-31-2023



# Aspen Field Services



Passenger's Seat / 08-31-2023



Driver's Seat / 08-31-2023



# Aspen Field Services



Transmission / 08-31-2023



Pedals / Floorboard / 08-31-2023



# Aspen Field Services



Floorboard / 08-31-2023



Floorboard / 08-31-2023



# Aspen Field Services



Radio / A/C / Switches and Controls / 08-31-2023



Switches and Controls / 08-31-2023



# Aspen Field Services



Steering Wheel / 08-31-2023



Mirrors / 08-31-2023



# Aspen Field Services



Mirrors / 08-31-2023



Steps / Handrails / 08-31-2023



# Aspen Field Services



Handrails / 08-31-2023



Handrails / 08-31-2023



# Aspen Field Services



Steps / 08-31-2023



Handrails / 08-31-2023



# Aspen Field Services



Transmission Information / 08-31-2023



Exhaust Pipe / 08-31-2023



# Aspen Field Services



Interior / 08-31-2023



Engine Compartment / 08-31-2023



# Aspen Field Services



Engine Compartment / 08-31-2023



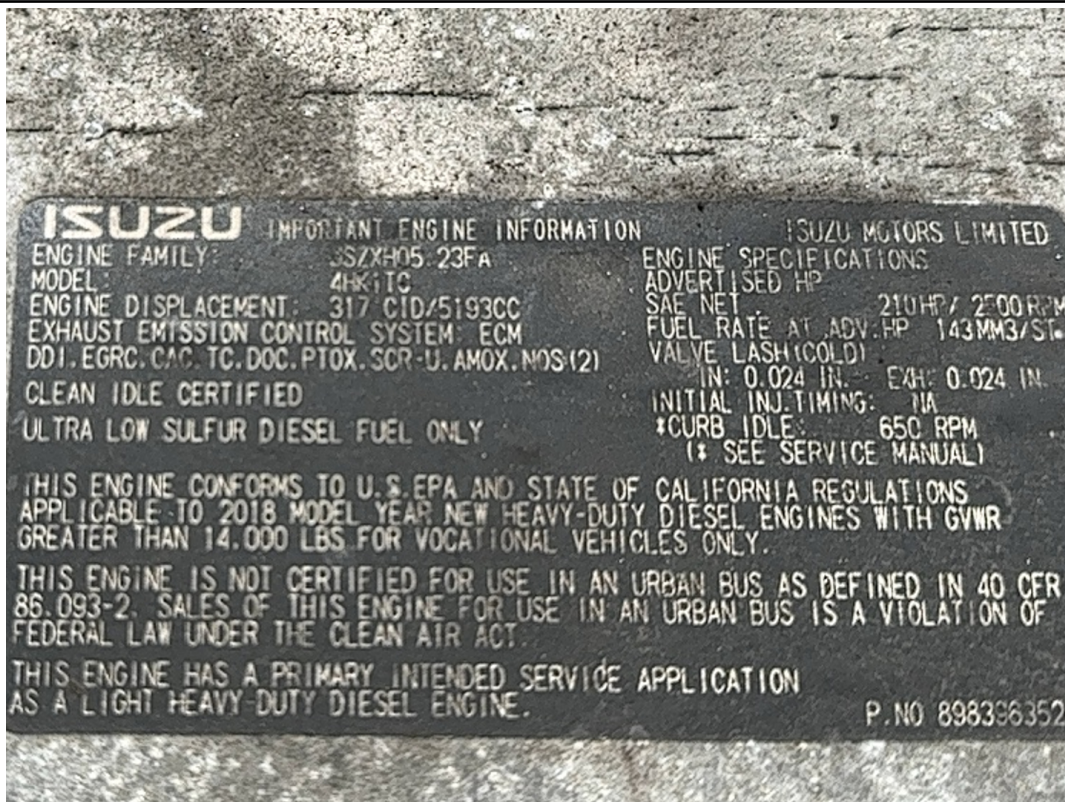
Coolant Level / 08-31-2023



# Aspen Field Services



Oil Dipstick / 09-01-2023



Engine Information / 08-31-2023



# Aspen Field Services



Left Steer Tire Condition / 08-31-2023



Left Steer Tire Brand / 08-31-2023



# Aspen Field Services



Left Steer Tire Size / 08-31-2023



Left Steer Tire Condition / 08-31-2023



## Aspen Field Services



Suspension / Axles / 08-31-2023



Right Steer Tire Condition / 08-31-2023



# Aspen Field Services



Right Steer Tire Brand / 08-31-2023



Right Steer Tire Size / 08-31-2023



# Aspen Field Services



First Right Outer Drive Tire Condition / 08-31-2023



Suspension / Axles / 08-31-2023



# Aspen Field Services



Right Outer Drive Tire Condition / 08-31-2023



Right Outer Drive Tire Brand / 08-31-2023



# Aspen Field Services



Right Outer Drive Tire Size / 08-31-2023



Right Inner Drive Tire Condition / Right Outer Drive Tire Condition / 08-31-2023



## Aspen Field Services



Suspension / Axles / 08-31-2023



Left Outer Drive Tire Condition / 08-31-2023



# Aspen Field Services



Left Outer Drive Tire Brand / 08-31-2023



Left Outer Drive Tire Size / 08-31-2023



# Aspen Field Services



Left Inner Drive Tire Condition / Left Outer Drive Tire Condition / 08-31-2023



Suspension / Axles / 08-31-2023



# Aspen Field Services



Front Lights / 08-31-2023



Rear Lights / 08-31-2023