



Aspen Field Services

Job #: 60605 /

VIN: JALC4W164L7K00414

20' DRY VAN BODY, DIESEL 2019 - ISUZU NPR-XD - LA130074 / LA130074

| Specifications | |
|---------------------------------|--|
| Year | 2019 |
| Make | ISUZU |
| Model | NPR-XD |
| Date of Inspection | 09/21/2023 |
| Location of Inspection | 26125 Van Dyke Ave, Center Line, MI, 48015 |
| VIN | JALC4W164L7K00414 |
| GVWR | 16,000 lbs |
| Odometer | 94,254 |
| Engine Hours | 6,731 |
| EMS Warning Lights | Active Warnings |
| Cab Interior | No Damages Observed |
| Driver's Seat | See Notes |
| Passenger's Seat | No Damages Observed |
| Transmission Type | Automatic |
| Pedals | No Damages Observed |
| Floorboard | See Notes |
| Radio | Yes |
| A/C | Yes |
| Switches and Controls | No Damages Observed |
| Power Mirrors | No |
| Heated Mirrors | No |
| Steering Wheel | No Damages Observed |
| Mirrors | No Damages Observed |
| Steps | No Damages Observed |
| Handrails | No Damages Observed |
| Exhaust Pipe | Single / No Damages Observed |
| Engine Compartment | No Damages Observed |
| Oil Dipstick | Good Level / Dark Color |
| Coolant Level | Low Level |
| Suspension | No Damages Observed |
| Axles | No Damages Observed |
| Front Lights | No Damages Observed |
| Rear Lights | See Notes |
| Cylinders | N/A |
| Left Steer Tire Condition | No Damages Observed |
| Left Steer Tire Brand | Gladiator |
| Left Steer Tire Size | 225/70R19.5 |
| Left Outer Drive Tire Condition | No Damages Observed |
| Left Outer Drive Tire Brand | Doublecoin |
| Left Outer Drive Tire Size | 225/70R19.5 |

Equipment Photo



Video Inspection Link

<https://app.aspenfieldservices.com/jobs/video/ZrEJALTEXPGiESAnD>

Notes / Description

Part of the engine information was acquired from <https://driving-tests.org/vin-decoder/>. The rear of the frame rails has been cut to remove the box off the frame.



Aspen Field Services

Job #: 60605 /

VIN: JALC4W164L7K00414

| | |
|----------------------------------|-------------------------------------|
| Left Inner Drive Tire Condition | No Damages Observed |
| Right Steer Tire Condition | No Damages Observed |
| Right Steer Tire Brand | Gladiator |
| Right Steer Tire Size | 225/70R19.5 |
| Right Outer Drive Tire Condition | No Damages Observed |
| Right Outer Drive Tire Brand | Doublecoin |
| Right Outer Drive Tire Size | 225/70R19.5 |
| Right Inner Drive Tire Condition | No Damages Observed |
| Axle Information | Front: 6,630 lbs / Rear: 11,020 lbs |
| Transmission Information | Could Not Be Located |
| Engine Information | ISUZU 5.2L In-Line 4HK1-TC / 210 HP |

| Visible Damages | |
|----------------------|--|
| Windshield | The glass is cracked. |
| Driver's Seat | The bottom seat cushion has holes in it. |
| Floor Mat | The black rubber floor mat is worn through. |
| Gray Floor Cover | The cover is ripped on the passenger side. |
| Signal Light Lens | The rear right signal light lens is cracked. |
| Engine Oil | The engine oil is dark in color. |
| Coolant | The coolant is low in the reservoir. |
| Frame Rails Rusty | The frame rails are rusty. |
| Steering Oil Service | The dash is showing that the steering oil service is past due. |

Aspen Field Services



Front Left / 09-21-2023



Front / 09-21-2023

Aspen Field Services



Front Right / 09-21-2023



Rear Left / 09-21-2023

Aspen Field Services



Rear / 09-21-2023



Rear Right / 09-21-2023

Aspen Field Services

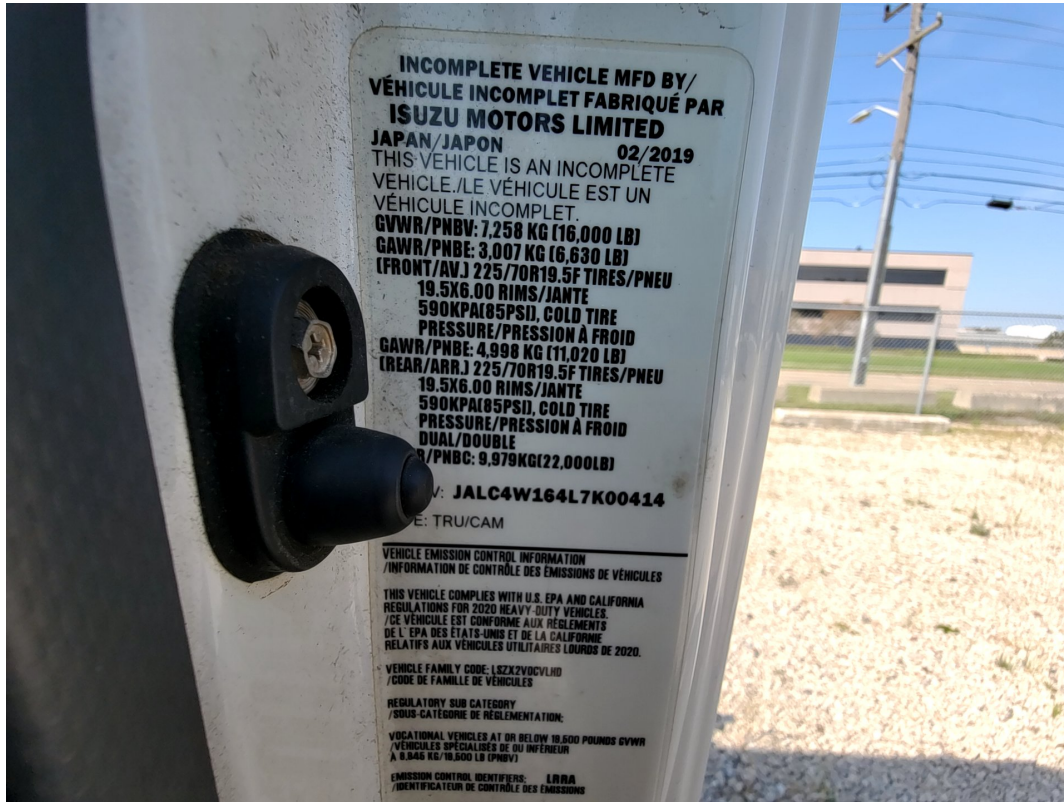


Right / 09-21-2023



Left / 09-21-2023

Aspen Field Services



VIN: JALC4W164L7K00414 / Axle Information / GVWR: 16,000 lbs / 09-21-2023



Engine Hours: 6,731 / 09-21-2023

Aspen Field Services



Cab Interior / 09-21-2023



Driver's Seat / 09-21-2023

Aspen Field Services



Floorboard / 09-21-2023



Pedals / 09-21-2023

Aspen Field Services



Steering Wheel / 09-21-2023



Switches and Controls / A/C / Radio / 09-21-2023

Aspen Field Services



Switches and Controls / 09-21-2023



Odometer: 94,254 / 09-21-2023

Aspen Field Services



EMS Warning Lights / 09-21-2023



Passenger's Seat / 09-21-2023

Aspen Field Services



Floorboard / 09-21-2023



Switches and Controls / 09-21-2023

Aspen Field Services



Transmission Type / 09-21-2023



Steps / 09-21-2023

Aspen Field Services



Handrails / 09-21-2023



Handrails / 09-21-2023

Aspen Field Services



Mirrors / 09-21-2023



Mirrors / 09-21-2023

Aspen Field Services



Steps / 09-21-2023



Handrails / 09-21-2023

Aspen Field Services



Handrails / 09-21-2023



Axles / 09-21-2023

Aspen Field Services



Suspension / Axles / 09-21-2023



Suspension / Axles / 09-21-2023

Aspen Field Services



Suspension / Axles / 09-21-2023



Exhaust / 09-21-2023

Aspen Field Services



Engine Compartment / 09-21-2023



Engine Compartment / 09-21-2023

Aspen Field Services

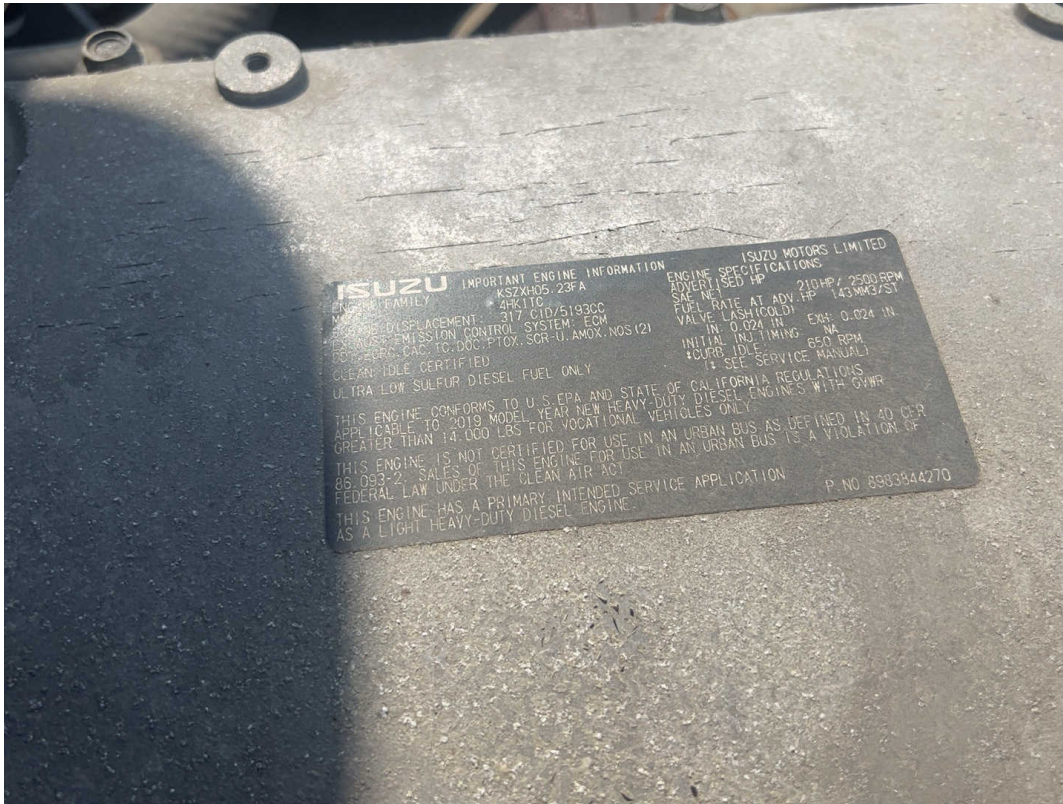


Oil Dipstick / 09-21-2023



Coolant Level / 09-21-2023

Aspen Field Services



Engine Information / 09-21-2023



Front Lights / 09-21-2023

Aspen Field Services



Front Lights / 09-21-2023



Rear Lights / 09-21-2023

Aspen Field Services



Left Steer Tire Condition / 09-21-2023



Left Steer Tire Brand / 09-21-2023

Aspen Field Services



Left Steer Tire Size / 09-21-2023



Left Outer Drive tire Condition / Left Inner Drive tire Condition / 09-21-2023

Aspen Field Services



Left Outer Drive tire Brand / 09-21-2023



Left Outer Drive tire Size / 09-21-2023

Aspen Field Services



Right Steer Tire Condition / 09-21-2023



Right Steer Tire Brand / 09-21-2023

Aspen Field Services



Right Steer Tire Size / 09-21-2023



Right Outer Drive Tire Condition / Right Inner Drive Tire Condition / 09-21-2023

Aspen Field Services



Right Outer Drive Tire Brand / 09-21-2023



Right Outer Drive Tire Size / 09-21-2023