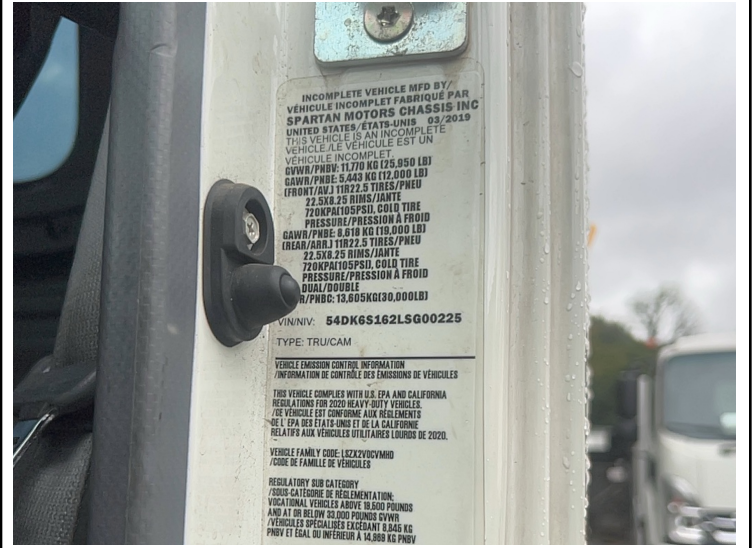


DIESEL 2020 - ISUZU FTR CHASSIS - LA130109 / LA130109

Specifications

Year	2020
Make	Isuzu
Model	FTR
Date of Inspection	09/18/2023
Location of Inspection	1463 US Hwy 22, Mountainside, NJ, 07092
VIN	54DK6S162LSG00225
GVWR	25,950 lbs
Odometer	122,095
Engine Hours	3,792
EMS Warning Lights	Active Warnings
Cab Interior	See Notes
Driver's Seat	See Notes
Passenger's Seat	No Damages Observed
Transmission Type	Automatic
Pedals	No Damages Observed
Floorboard	No Damages Observed
Radio	Yes
A/C	Yes
Switches and Controls	No Damages Observed
Power Mirrors	Yes
Heated Mirrors	Yes
Steering Wheel	No Damages Observed
Mirrors	No Damages Observed
Steps	No Damages Observed
Handrails	No Damages Observed
Exhaust Pipe	Single - No Damages Observed
Engine Compartment	No Damages Observed
Oil Dipstick	Good Level / Dark In Color
Coolant Level	Low Level
Suspension	Leaf Spring - No Damages Observed
Axles	No Damages Observed
Front Lights	No Damages Observed
Rear Lights	See Notes
Left Steer Tire Condition	No Damages Observed
Left Steer Tire Brand	Gripower
Left Steer Tire Size	11R22.5
Rear Left Outer Drive Tire Condition	No Damages Observed
Rear Left Outer Drive Tire Brand	Tourador
Rear Left Outer Drive Tire Size	11R22.5
Rear Left Inner Drive Tire Condition	No Damages Observed

Equipment Photo



Video Inspection Link

<https://app.aspenfieldservices.com/jobs/video/NkFckWTTXC5f7jwYY>

Notes / Description

The engine information was confirmed through VIN decoder.



Aspen Field Services

Job #: 59616 /

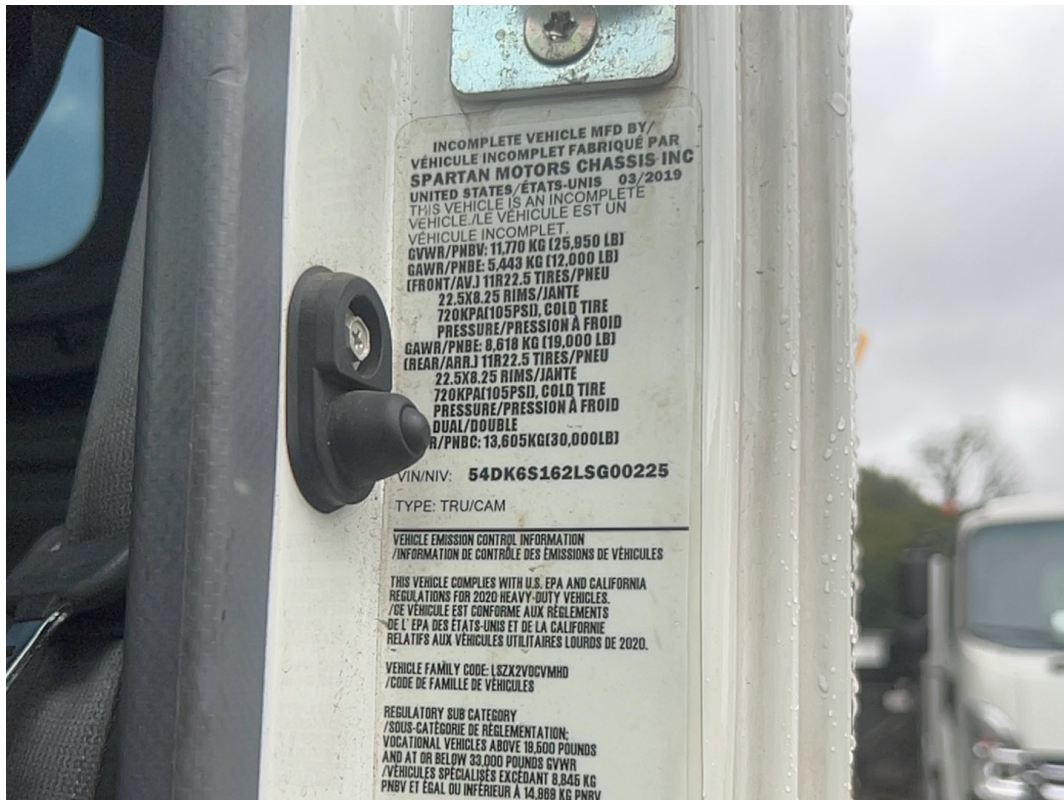
VIN: 54DK6S162LSG00225

Right Steer Tire Condition	No Damages Observed
Right Steer Tire Brand	Gripower
Right Steer Tire Size	11R22.5
Rear Right Outer Drive Tire Condition	No Damages Observed
Rear Right Outer Drive Tire Brand	Tourador
Rear Right Outer Drive Tire Size	11R22.5
Rear Right Inner Drive Tire Condition	No Damages Observed
Axle Information	GAWR F: 12,000 lbs / R: 19,000 lbs
Transmission Information	Could Not Be Located
Engine Information	5.2L In-Line Isuzu 4HK1-TC

Visible Damages

Missing Panel	There is a panel missing from the dash below the cup holders and is laying on the passenger's floor.
Shift Lever Console	The plastic console is cracked on the shifter housing.
Front Bumper	The front bumper is bent.
Taillights	The taillights are missing.
Coolant	The coolant is low in the reservoir.
Engine Oil	The engine oil is dark in color.
Brake Chamber Spring	The spring in the brake chamber is possibly damaged. The spring is not centered in the chamber and the dirt plug is not installed in the hole.
Driver's Seat	The driver's seat is stained.
EMS Warnings	The dash is showing a Regen Required warning.

Aspen Field Services



VIN: 54DK6S162LSG00225 / GVWR: 25,950 lbs / Axle Information / 09-18-2023



Cab Interior / 09-18-2023

Aspen Field Services



Floorboard / 09-18-2023



Floorboard / Pedals / 09-18-2023

Aspen Field Services



Switches and Controls / 09-18-2023



Steering Wheel / 09-18-2023

Aspen Field Services



Driver's Seat / 09-18-2023



Switches and Controls / 09-18-2023

Aspen Field Services



Switches and Controls / Radio / A/C / Power Mirrors / Heated Mirrors / 09-18-2023



Transmission / 09-18-2023

Aspen Field Services



Passenger's Seat / 09-18-2023



Floorboard / 09-18-2023

Aspen Field Services



Odometer: 122,095 / 09-18-2023



Engine Hours: 3,792 / EMS Warning Lights / 09-18-2023

Aspen Field Services



Front / Front Lights / 09-18-2023



Rear / 09-18-2023

Aspen Field Services



Steps / 09-18-2023



Handrails / 09-18-2023

Aspen Field Services



Handrails / 09-18-2023



Mirrors / 09-18-2023

Aspen Field Services



Handrails / 09-18-2023



Handrails / 09-18-2023

Aspen Field Services



Steps / 09-18-2023



Mirrors / 09-18-2023

Aspen Field Services



Exhaust Pipe / 09-18-2023



Front Left / 09-18-2023

Aspen Field Services



Front Right / 09-18-2023



Left / 09-18-2023

Aspen Field Services



Rear Left / 09-18-2023



Rear Right / 09-18-2023

Aspen Field Services



Engine Compartment / 09-18-2023



Engine Compartment / 09-18-2023

Aspen Field Services



Coolant Level / 09-18-2023



Oil Dipstick / 09-18-2023

Aspen Field Services



Left Steer Tire Condition / 09-18-2023



Left Steer Tire Condition / 09-18-2023

Aspen Field Services



Left Steer Tire Brand / 09-18-2023



Left Steer Tire Size / 09-18-2023

Aspen Field Services



Axles / Suspension / 09-18-2023



Right Steer Tire Condition / 09-18-2023

Aspen Field Services



Right Steer Tire Condition / 09-18-2023



Right Steer Tire Brand / 09-18-2023

Right Steer Tire Size / 09-18-2023



Axles / Suspension / 09-18-2023

Aspen Field Services



Rear Right Outer Drive Tire Condition / 09-18-2023



Rear Right Outer Drive Tire Condition / Rear Right Inner Drive Tire Condition / Suspension / 09-18-2023

Aspen Field Services



Rear Right Outer Drive Tire Size / 09-18-2023



Rear Right Outer Drive Tire Brand / 09-18-2023

Aspen Field Services



Axles / Suspension / 09-18-2023



Rear Left Outer Drive Tire Condition / 09-18-2023

Aspen Field Services



Rear Left Outer Drive Tire Condition / Rear Left Inner Drive Tire Condition / Suspension /
09-18-2023



Rear Left Outer Drive Tire Brand / 09-18-2023

Aspen Field Services



Rear Left Outer Drive Tire Size / 09-18-2023



Axles / Suspension / 09-18-2023